



Description

SERIES: RI 9BU 55

- * Robust plastic case with screw terminal
- * large, isolated base plate
- * Blocking Voltage to 1800V
- * High surge currents
- * Easy Chassis mounting

Typical Applications

- * Single & Three Phase rectifiers for power supplies
- * Input rectifiers for variable frequency drives
- * Rectifier for DC motor field supplies
- * Battery charger rectifiers

Symbol	Conditions	RI 9BU 55
I_D	$T_{Case} = 100^\circ C$	52A
I_{FSM}	$T_{vj} = 25^\circ C, 10ms$	370A
I^2t	$T_{vj} = 25^\circ C, 8,3...10ms$	685A ² s
V_F	$T_{vj} = 25^\circ C, I_T = 75A$	1.75V
$V_{(TO)}$	$T_{vj} = 125^\circ C$	0.85V
r_t	$T_{vj} = 125^\circ C$	12mΩ
I_{RD}	$T_{vj} = 125^\circ C; V_{RD} = V_{RRM}$	2mA
R_{thjc}	Total	0.2° C/W
R_{thch}	total	0.05 °C/W
T_{vj}		-40... +125° C
T_{stg}		-40... +125° C
V_{isol}	A.C. 50...60Hz; r.m.s. ; 1min	2500V
M_1	case to heat sink	} SI units / US units
M_2	Bus bar to terminals	
w		126g.

SINGLE PHASE DIODE MODULES

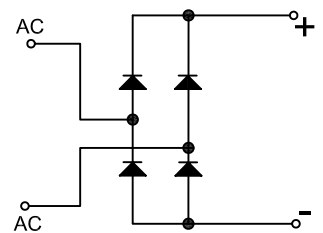
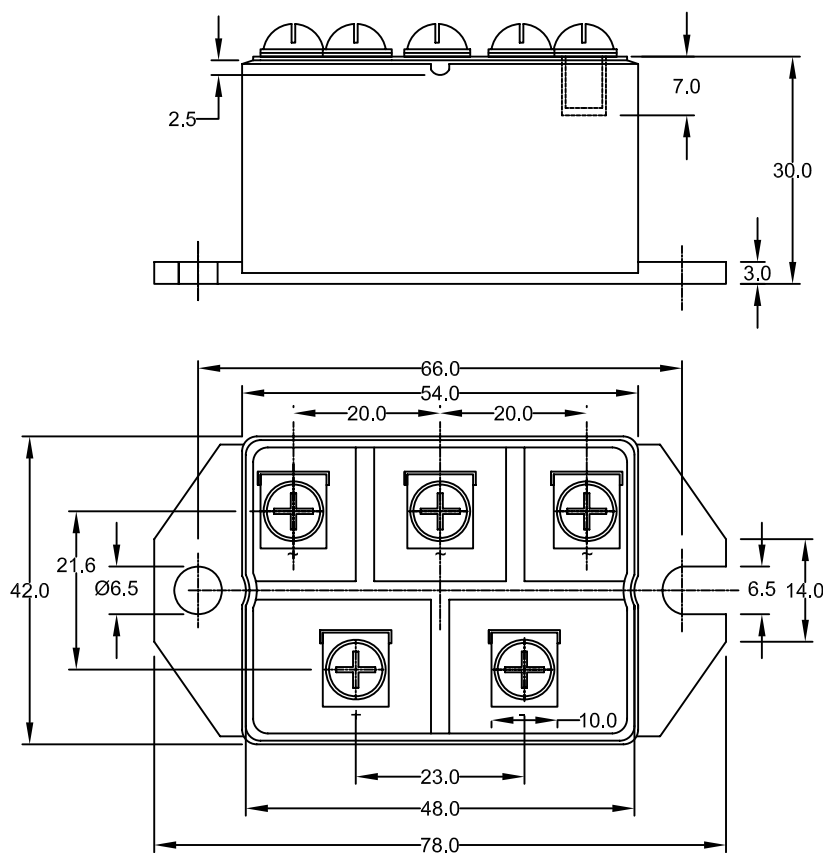
SERES: RI 9BU 55

VOLTAGE & APPLICATION DATA

TYPE NUMBER			40	60	80	100	120	140	160	180
V_{RRM}	Maximum repetitive peak reverse voltage	V	400	600	800	1000	1200	1400	1600	1800
V_{RSM}	Maximum non-repetitive peak reverse voltage	V	500	700	900	1100	1300	1500	1700	1900
V_{RMS}	Recommended AC supply voltage	V	160	240	320	400	480	560	640	720
I_{RM}	Maximum peak reverse current per diode $T_J = T_{J \text{ max}}$	mA	2	2	2	2	2	2	2	2

RI 9BU

SERIES RI 9BU CIRCUITS



SINGLE PHASE DIODE MODULES

SERES: RI 9BU 55

ORDER INFORMATION TABLE

RI 9BU	55	/	160
①	②		③

- ① Essential Part Number
- ② Curren Code
- ③ Voltage Rating (See table)