



Ruttonsha International Rectifier Ltd.

THREE PHASE DIODE MODULES

SERIES: RI 8TU 60 & RI 8TU 100

Description

- * Robust plastic case with screw terminal
- * large, isolated base plate
- * Blocking Voltage to 1800V
- * High surge currents
- * Easy Chassis mounting

Typical Applications

- * Single & Three Phase rectifiers for power supplies
- * Input rectifiers for variable frequency drives
- * Rectifier for DC motor field supplies
- * Battery charger rectifiers

Symbol	Conditions	RI 8TU 60	RI 8TU 100
I_D		60A	100A
T_{CASE}		102°C	93°C
I_{FSM}	$T_{vj} = 25^\circ\text{C}, 10\text{ms}$	1000A	1150A
I^2t	$T_{vj} = 25^\circ\text{C}, 8,3\dots 10\text{ms}$	5000A ² s	6600A ² s
V_F	$T_{vj} = 25^\circ\text{C}, I_F = 150\text{A}$	1.60V	1.35V
$V_{(TO)}$	$T_{vj} = 125^\circ\text{C}$	0.85V	0.85V
r_t	$T_{vj} = 125^\circ\text{C}$	5mΩ	5mΩ
I_{RD}	$T_{vj} = 25/125^\circ\text{C}; V_{RD} = V_{RRM}$	0.5/2mA	0.5/2mA
R_{thjs}	Per Diode	1.0° C/W	0.85° C/W
	total	0.167 °C/W	0.14 °C/W
R_{thch}	total	0.05 °C/W	
T_{vj}		-40... +125° C	
T_{stg}		-40... +125° C	
V_{isol}	A.C. 50...60Hz; r.m.s. ; 1min	2500V	
M_1	case to heat sink	5 Nm ± 15 %	
M_2	Bus bar to terminals	5 Nm ± 15 %	
w		165g.	

THREE PHASE DIODE MODULES

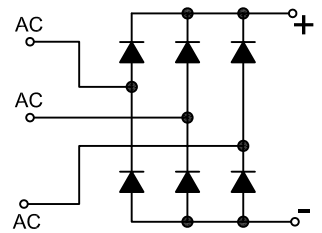
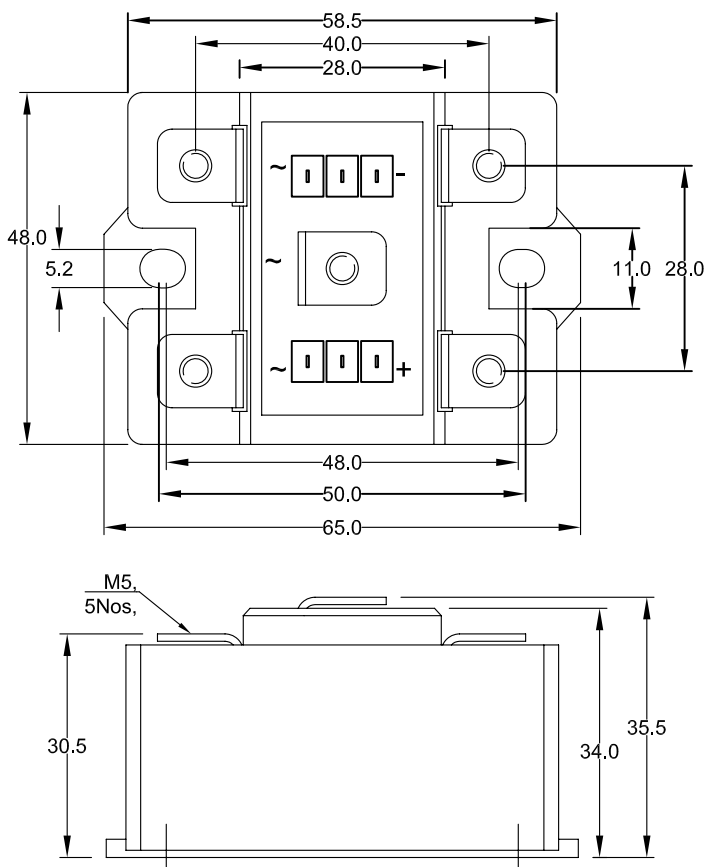
SERIES: RI 8TU 60 & RI 8TU 100

VOLTAGE & APPLICATION DATA

TYPE NUMBER			04	06	08	10	12	14	16	18
V_{RRM}	Maximum repetitive peak reverse voltage	V	400	600	800	1000	1200	1400	1600	1800
V_{RSM}	Maximum non-repetitive peak reverse voltage	V	500	700	900	1100	1300	1500	1700	1900
V_{RMS}	Recommended AC supply voltage	V	160	240	320	400	480	560	640	720
I_{RM}	Maximum peak reverse current per diode $T_J = T_{J\ max}$	mA	2	2	2	2	2	2	2	2

RI 8TU

SERIES RI 8TU CIRCUITS



THREE PHASE DIODE MODULES

SERIES: RI 8TU 60 & RI 8TU 100

ORDER INFORMATION TABLE

RI 8TU	60/100	/	16
①	②		③

- ① Essential Part Number
- ② Curren Code
- ③ Voltage Rating (See table)